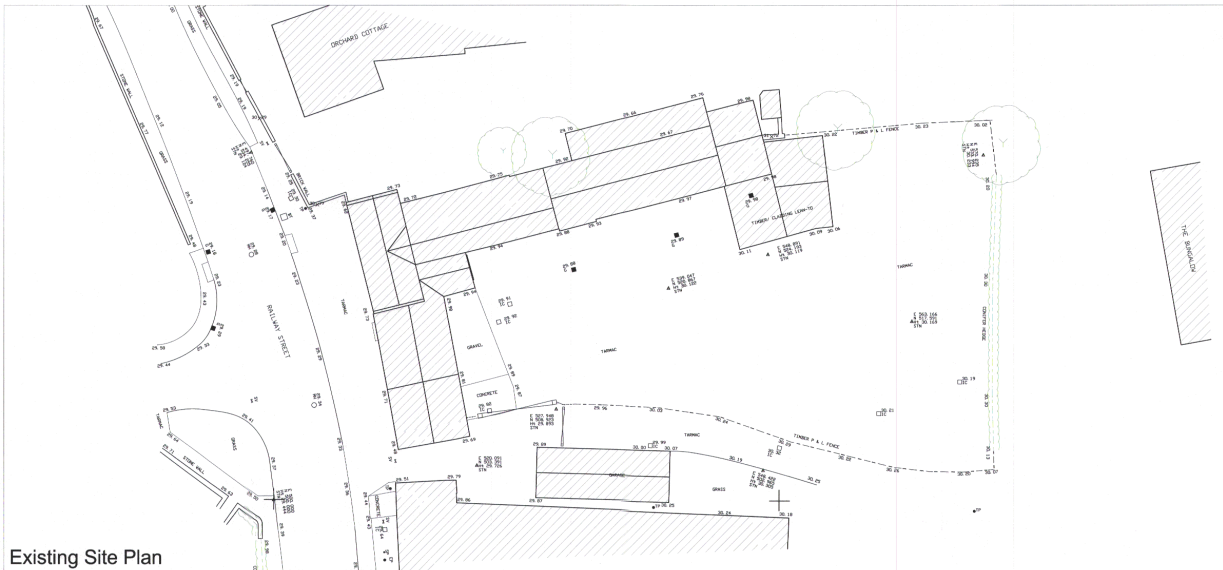


Demolition Plan



Existing Site Plan


Key :

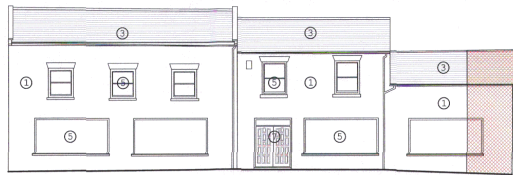


Areas to be demolished.

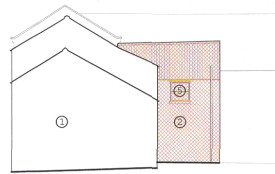


THIS PLAN HAS BEEN MADE BY ONE OF THE ARCHITECTS OF DSP ARCHITECTS LLP. ANY CHANGES TO THIS PLAN MUST BE MADE BY ONE OF THE ARCHITECTS OF DSP ARCHITECTS LLP. ANY CHANGES TO THIS PLAN MUST BE MADE BY ONE OF THE ARCHITECTS OF DSP ARCHITECTS LLP.

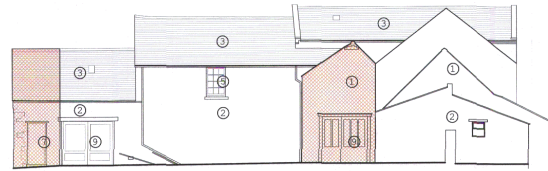
A: Minor alterations to existing conditions		16/10/14	VD	JA
Site:	Monks Cross	Site	1:100	10/10/14
Project No:	JB	16/07/14		
Planning				
 DSP architects		DSP Architects LLP 2 Fiddlers Lane York YO38 4ZP United Kingdom Tel: +44(0)1904 479770 Fax: +44(0)1904 492230 E-mail: info@dsparchitects.co.uk Website: www.dsparchitects.co.uk		
Slingsby Development LLP Colenso House, Omega 1, Monks Cross Drive, Monks Cross, York.				
Former Car Garage Railway Street Slingsby				
Restoration to reform 2 new dwellings Existing Site Plan & Demolition Plan				
Scale:	1:200	Project No:	4008	Issue No:
Date:	(05) 10	Sheet:	10	Of:
		A		



Elevation 1

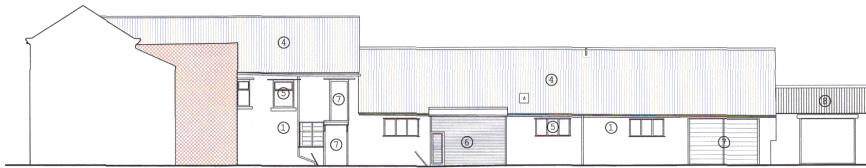


Elevation 2

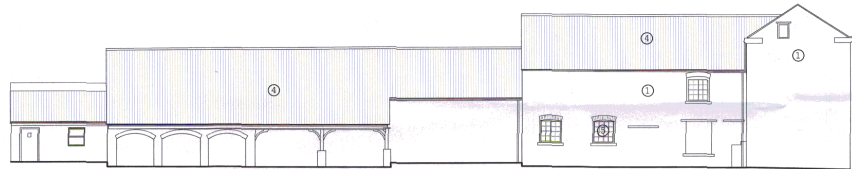


Elevation 3

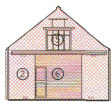
- NOTES**
- Materials-
- ① Stone
 - ② Brickwork
 - ③ Slates
 - ④ Pantiles
 - ⑤ Timber Framed Windows
 - ⑥ Galvanised Roller Shutter
 - ⑦ Timber Door
 - ⑧ Steel Sheet Roof Covering
 - ⑨ Glazed Timber Door



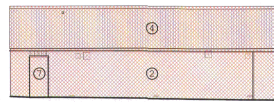
Elevation 4



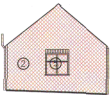
Elevation 5



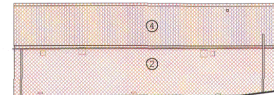
Elevation 6



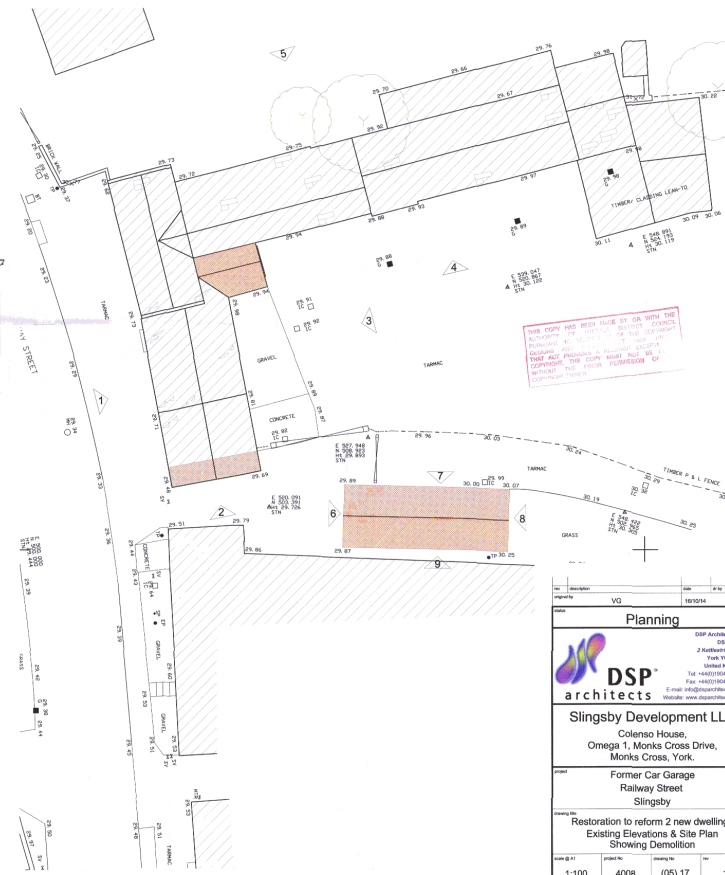
Elevation 7



Elevation 8



Elevation 9



REFERENCE PLAN Not To Scale (See (05) 10 Demolition Plan)

Scale	1:100	4008	(05) 17	
<p>Planning</p> <p>DSP Architects LLP DSP House 2 Rothering Lane York YO24 4BE United Kingdom Tel: +44(0)1904 619170 Fax: +44(0)1904 619130 E-mail: info@dsparchitects.co.uk Website: www.dsparchitects.co.uk</p> <p>Slingsby Development LLP Colenso House, Omega 1, Monks Cross Drive, Monks Cross, York.</p> <p>Former Car Garage Railway Street Slingsby</p> <p>Showing No: Restoration to reform 2 new dwellings Existing Elevations & Site Plan Showing Demolition</p>				